

# FOR LEASE

51 N. Main (Highway 4 at 49), Angels Camp

Retail Space Available: 1,740 sf



Retail Space



Local Management



## Building Features

- Highway Monument Sign
- Abundant parking

## Suite G Features

- 1,740 sq. ft.
- Large Open Area
- One private office
- One private restroom
- Kitchen / Storage Area

## Surrounding Business Services

- Highway frontage is a strong tourist draw
- Anchored by CVS, McDonald's, Starbucks

## Location & Access

- Located at NW corner of Hwys 4 and 49

## Leasing

- Flexible Lease Terms
- Full Commission
- Competitive Pricing



## Please contact:

Lee Jatta  
email: [lee@borelli.com](mailto:lee@borelli.com)  
office: 408.453.4700 x140

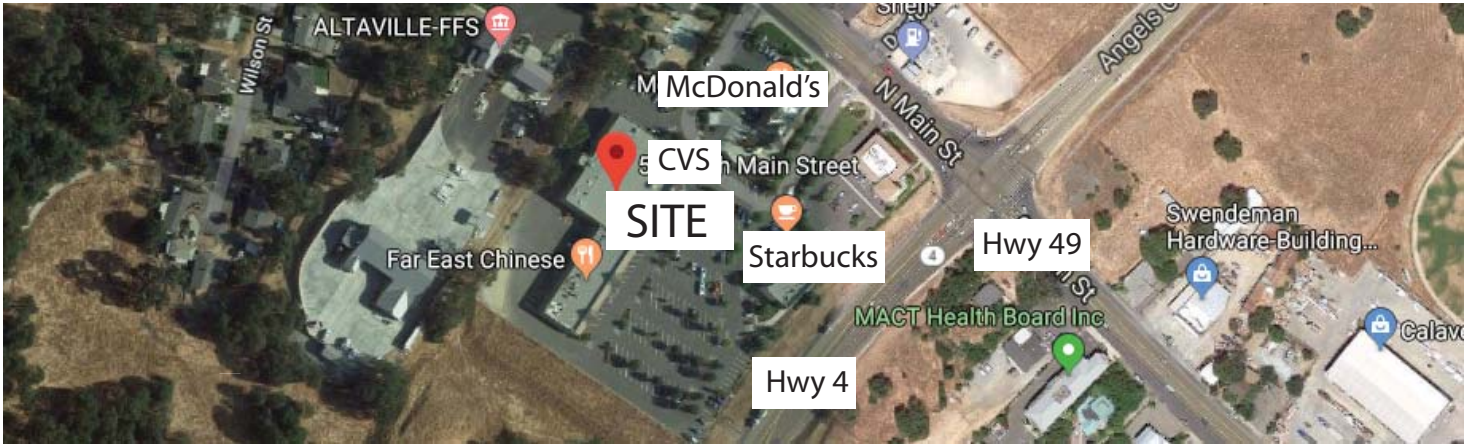
Buddy Parsons  
email: [buddy@borelli.com](mailto:buddy@borelli.com)  
office: 408.453.4700 x116



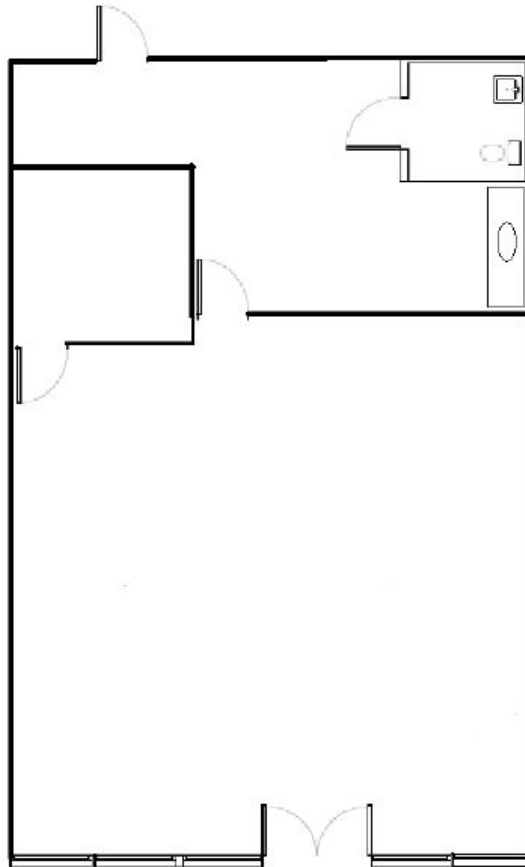
2051 Junction Ave., Suite 100  
San Jose, CA 95131-2100  
[info@borelli.com](mailto:info@borelli.com)  
[www.borelli.com](http://www.borelli.com)

The statement with the information it contains is given with the understanding that all negotiations relating to this purchase, renting or leasing of the property described above shall be conducted through this office. The above information, while not guaranteed, has been secured from sources we believe to be reliable. Offering subject to change.

# SITE & FLOOR PLANS



Suite G



Office	Property Location	Price	Access	Available
1,740 sf	51 North Main Street, Suite G Retail unit in a busy crossroads shopping center anchored by CVS pharmacy.	\$1.40 NNN	See Buddy	Available Now

Lee Jatta  
(408) 453-4700 x140  
lee@borelli.com

Buddy Parsons  
(408) 453-4700 x116  
buddy@borelli.com

**Borelli Investment Company**

2051 Junction Avenue, Suite 100  
San Jose, CA 95131  
www.borelli.com