

# CENTRAL PARK PLAZA

4 - 98 E. Fourth Ave., 487A - 493 S. El Camino Real  
San Mateo, CA

Retail & Office Spaces Currently Available

The statement with the information it contains is given with the understanding that all negotiations relating to this purchase, renting, or leasing of the property described above shall be conducted through this office. The above information, while not guaranteed, has been secured from sources we believe to be reliable. Offering subject to change.



# CENTRAL PARK PLAZA

4 - 98 E. Fourth Ave., 487A - 493 S. El Camino Real  
San Mateo, CA



Retail & Office Spaces Currently Available

# PROPERTY HIGHLIGHTS

## DEMOGRAPHICS

	Population	Average household income
1 mi	33,531	\$172,879
3 mi	138,838	\$175,952
5 mi	233,692	\$183,507

## TRAFFIC COUNTS

E. Fourth Ave.	28,281 ADT
S. El Camino Real	29,916 ADT



Central Park Plaza is located in the heart of Downtown San Mateo, providing exceptional street and foot traffic. The property is surrounded by numerous popular restaurants and retail destinations, and is less than ten minutes to major highways, including Highways 101 and 92 and Interstate 280. Caltrain is within walking distance of the property, allowing for efficient transportation. Central Park Plaza also includes a multi-level parking garage for the ease of your employees and customers. Contact us today to see your business at Central Park Plaza!

# CENTRAL PARK PLAZA



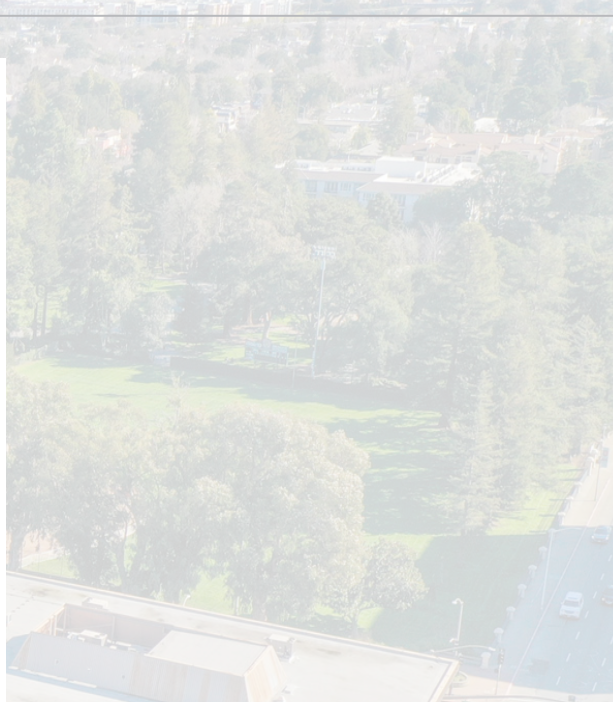
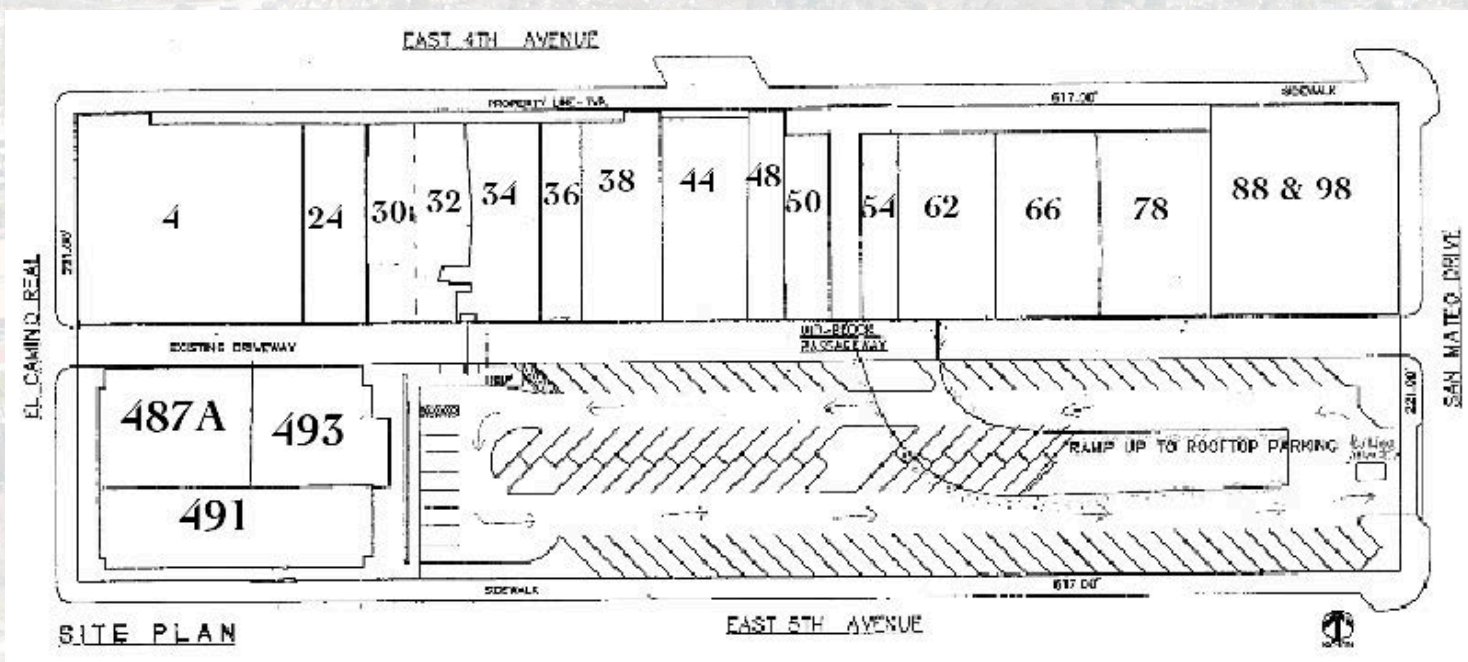
The statement with the information it contains is given with the understanding that all negotiations relating to this purchase, renting, or leasing of the property described above shall be conducted through this office. The above information, while not guaranteed, has been secured from sources we believe to be reliable. Offering subject to change.

PROPERTY

SITE PLAN & AVAILABILITIES

4 - 98 E. FOURTH AVE.

487A - 493 S. EL CAMINO REAL



SUITE	SIZE
30 E. Fourth Ave.	2,740 RSF
487A S. El Camino Real	3,042 RSF
493 S. El Camino Real	2,541 RSF

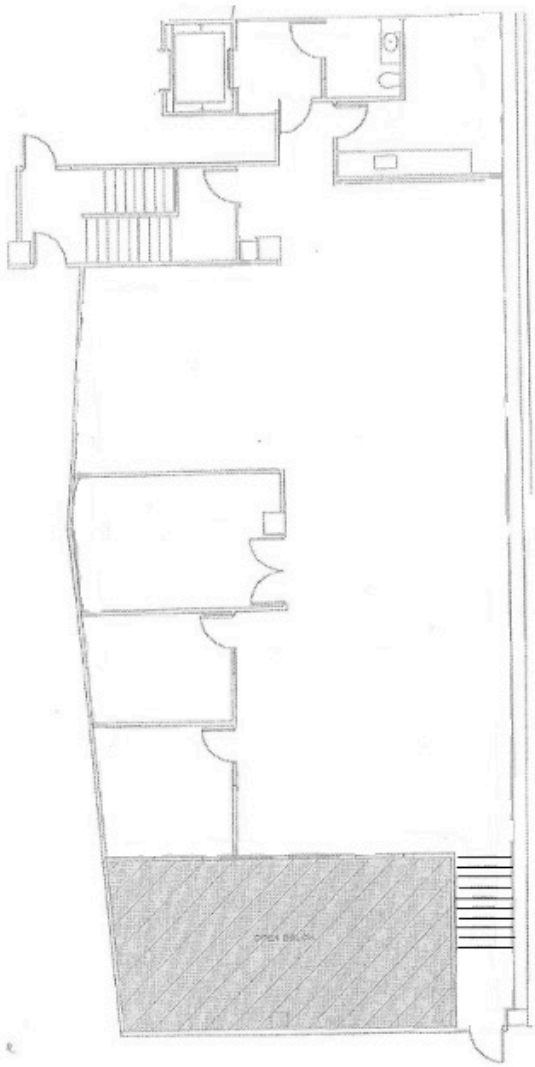
CENTRAL PARK PLAZA



The statement with the information it contains is given with the understanding that all negotiations relating to this purchase, renting, or leasing of the property described above shall be conducted through this office. The above information, while not guaranteed, has been secured from sources we believe to be reliable. Offering subject to change.

# 30 E. Fourth Ave.

2,740 RSF



- Large conference room
- Two offices
- Kitchenette

# CENTRAL PARK PLAZA



The statement with the information it contains is given with the understanding that all negotiations relating to this purchase, renting, or leasing of the property described above shall be conducted through this office. The above information, while not guaranteed, has been secured from sources we believe to be reliable. Offering subject to change.

# 487A - 493 S. El Camino Real

5,583 Total RSF

*Can be split: 487A (3,042 RSF)  
493 (2,541 RSF)*

487A



- One office
- Large collaborative open office
- Large conference room
- Two restrooms
- Kitchenette with upper & lower cabinetry, sink, and room for refrigerator



## CENTRAL PARK PLAZA



The statement with the information it contains is given with the understanding that all negotiations relating to this purchase, renting, or leasing of the property described above shall be conducted through this office. The above information, while not guaranteed, has been secured from sources we believe to be reliable. Offering subject to change.

# 487A - 493 S. El Camino Real

5,583 Total RSF

*Can be split: 487A (3,042 RSF)  
493 (2,541 RSF)*

493

- Two offices
- Large collaborative open office
- Large conference room
- Two restrooms
- Kitchenette with upper & lower cabinetry, sink, dishwasher, and room for mini refrigerator



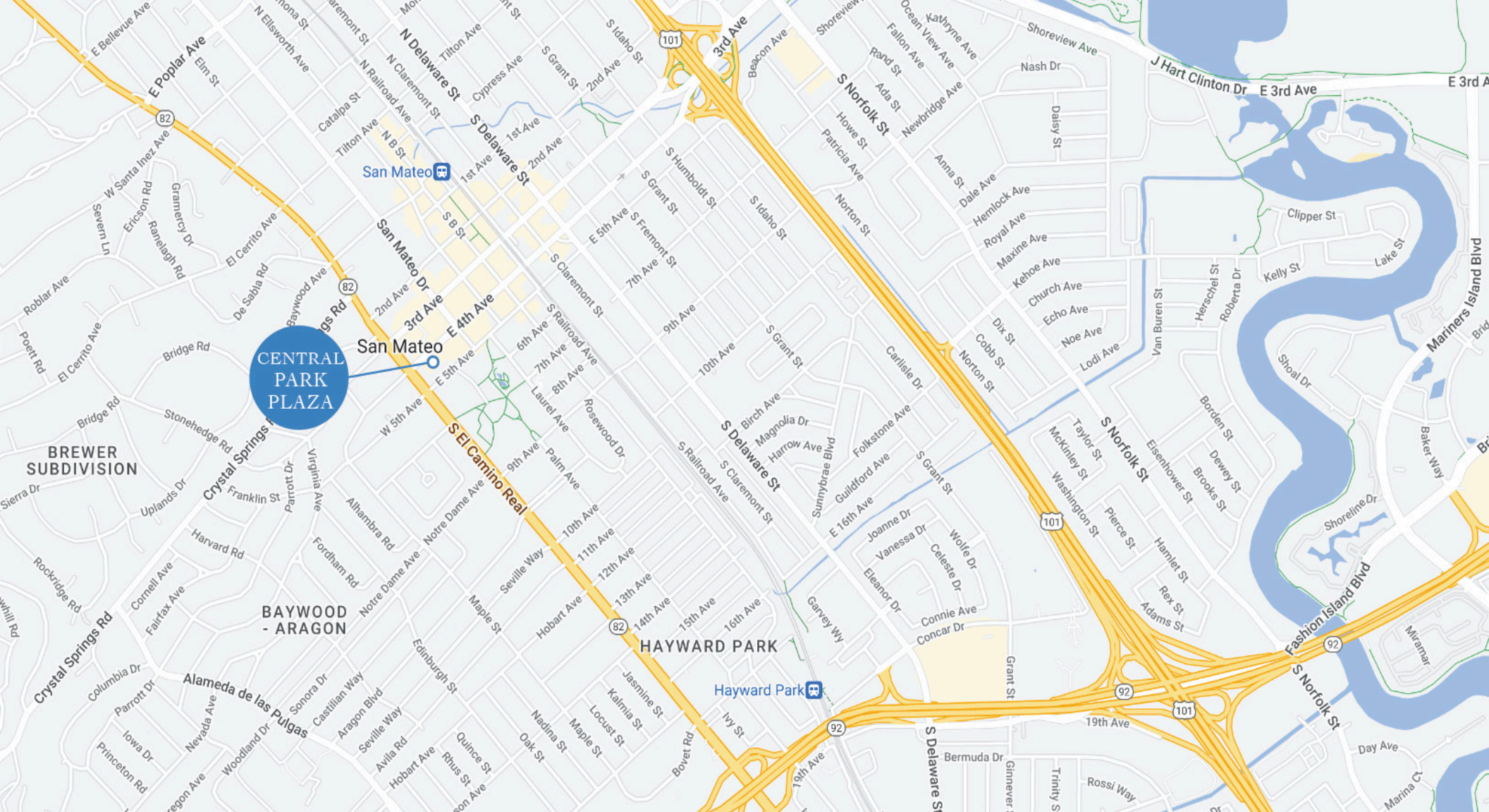
## CENTRAL PARK PLAZA



The statement with the information it contains is given with the understanding that all negotiations relating to this purchase, renting, or leasing of the property described above shall be conducted through this office. The above information, while not guaranteed, has been secured from sources we believe to be reliable. Offering subject to change.







HIGHWAY 101

0.7 mi

HIGHWAY 92

1.1 mi

INTERSTATE 280

5.0 mi

SAN FRANCISCO INTERNATIONAL AIRPORT

6.7 mi

# CENTRAL PARK PLAZA



The statement with the information it contains is given with the understanding that all negotiations relating to this purchase, renting, or leasing of the property described above shall be conducted through this office. The above information, while not guaranteed, has been secured from sources we believe to be reliable. Offering subject to change.

# CENTRAL PARK PLAZA

4 - 98 E. Fourth Ave.  
487A - 493 S. El Camino Real  
San Mateo, CA 94401 & 94402



**Buddy Parsons**  
President  
408.453.4700x116  
buddy@borelli.com  
LIC. 00754782

**Lee Jatta**  
Senior Vice President  
408.453.4700x140  
lee@borelli.com  
LIC. 01828564

**Abigail Parsons**  
Assistant Property Manager  
408.453.4700x100  
abigail@borelli.com  
LIC. 02114081