

FOR LEASE

2635 N. First Street, San Jose
Office Space: 560 sf to 7,349 sf



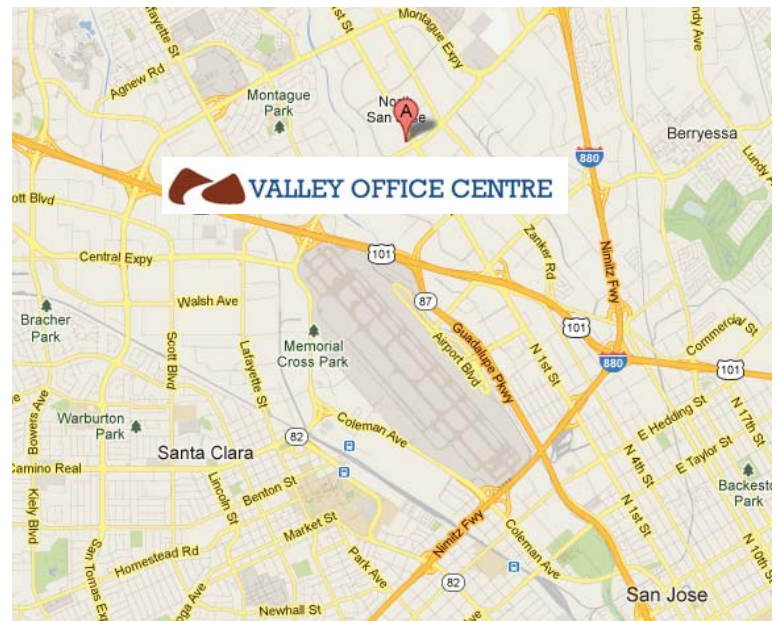
Corner of North First Street and Trimble in the Heart of the Golden Triangle

Building Features

- Large Interior Atrium with free Wi-Fi
- Fountains and Extensive Waterscaping
- Common Area Sink
- Showers on First Floor
- Elevator Served
- 3.48/1000 Parking
- Comcast High Speed Internet Available
- Locally Owned and Managed
- Immediate Occupancy Available

Location & Access

- Across from San Jose Light Rail Station
- Adjacent to Retail Corridor with Restaurants
- Immediate Access to Highways 880/101 and SJC



Please contact:

Lee Jatta • lee@borelli.com • 408.453.4700 x140
Buddy Parsons • buddy@borelli.com • 408.453.4700 x116

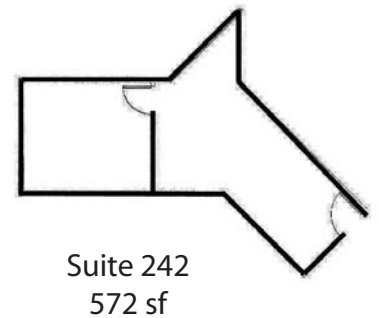
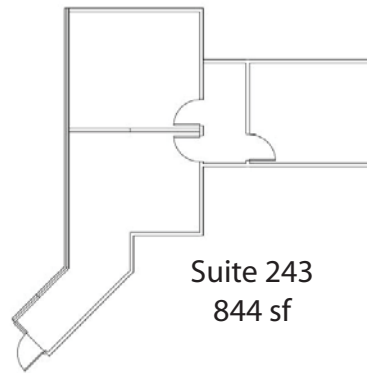
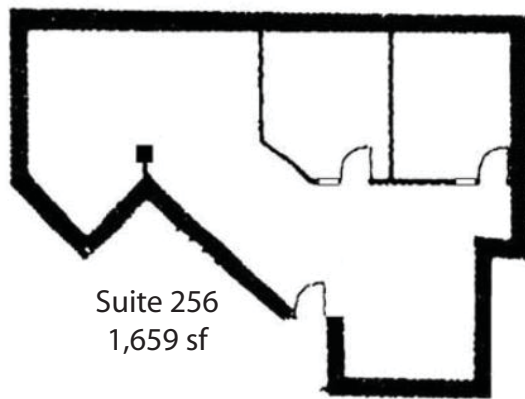
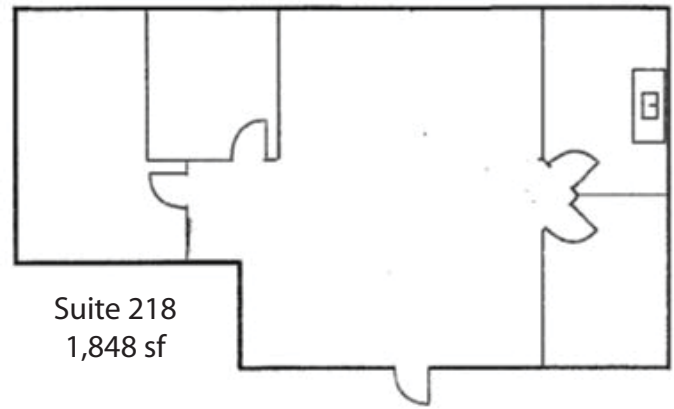
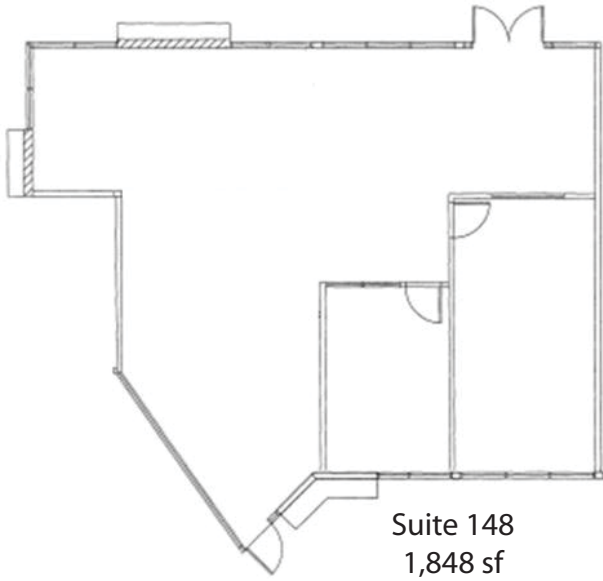
Virtual Tour and More:
ValleyOfficeCentre.com



2051 Junction Avenue, Suite 100
San Jose, CA 95131
info@borelli.com
www.borelli.com

The statement with the information it contains is given with the understanding that all negotiations relating to this purchase, renting or leasing of the property described above shall be conducted through this office. The above information, while not guaranteed, has been secured from sources we believe to be reliable. Offering subject to change.

FLOOR PLANS



Sq. Ft.	Property Location	Price	Access	Available Date
1,848	2635 North First Street, Suite 218 Three Privates, Open Area, Coffee Bar.	\$3.15 FS	See Lee or Buddy	7/1/19
1,848	2635 North First Street, Suite 148 Two Private Offices, Open Area.	\$3.15 FS	See Lee or Buddy	Available Now
1,659	2635 North First Street, Suite 256 Two Private Offices, Conference Room, Open Area.	\$3.15 FS	See Lee or Buddy	Available Now
844	2635 North First Street, Suite 243 Two Private Offices, Open Area.	\$3.15 FS	See Lee or Buddy	Available Now
572	2635 North First Street, Suite 242 One Private, Open Area.	\$1,801 /mo.	See Lee or Buddy	7/1/19